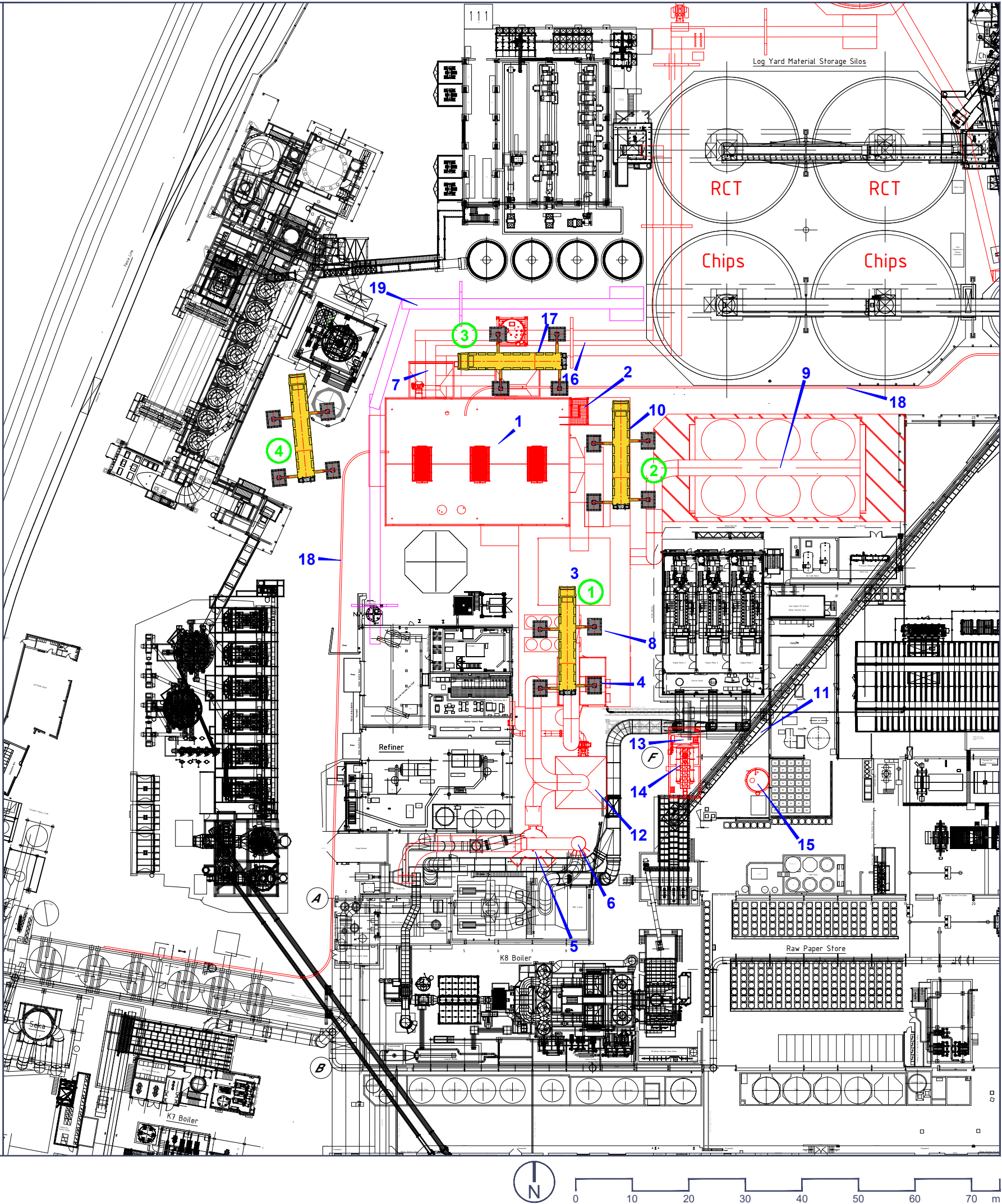
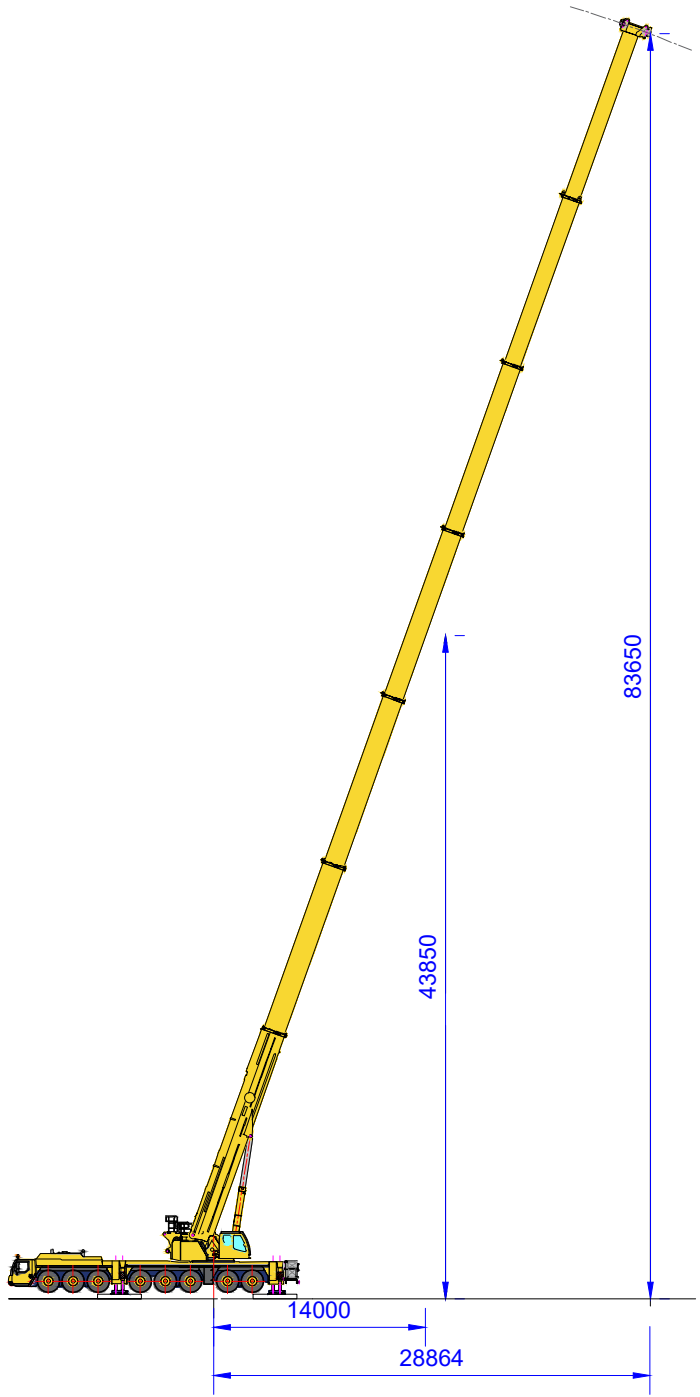


Crane Details

Crane Type:	Liebherr 1450-8.1
Crane Capacity:	450t
Outrigger Base:	10389m x 9600m
Crane Counterweight:	134t
Main Boom Length:	16.1m to 85m
Maximum Radius:	3m to 82m Main
Safe Work Load:	450t to 2.1t
Outrigger Point Loading:	TBC
Outrigger Mat Size:	3.8m x 1.6m
Max Ground Loading:	TBC
Maximum Weight Of Load:	TBC



- Proposed Development - New
- 1 - Boiler Building
 - 2 - Stair Tower
 - 3 - Bag Filter
 - 4 - ID Fan with Noise Enclosure
 - 5 - Silencer
 - 6 - Stack
 - 7 - Ash Pit
 - 8 - Turbine Building
 - 9 - ACC. (on elevated steel structure)
 - 10 - Service Building
 - 11 - Water Treatment
 - 12 - NOx. Catalyst
 - 13 - Effluent Pit
 - 14 - Ammonia Tank
 - 15 - Lime Silo
 - 16 - Feedstock Conveyor
 - 17 - Backup Feedstock Loading
 - 18 - Dust Blow Line into CHP
- Proposed Development - Replacement
- 19 - Transportation System between Existing Chip Silos and Existing Refiner Building
- Crane Positions
- #

0344 8700 007
axis.co.uk



Project

Kronospan Low Carbon Combined Heat and Power Facility

Figure Number

Figure 4.2

Figure Title

Crane Information during Construction

Scale

1:750 @A3

Date

December 2025